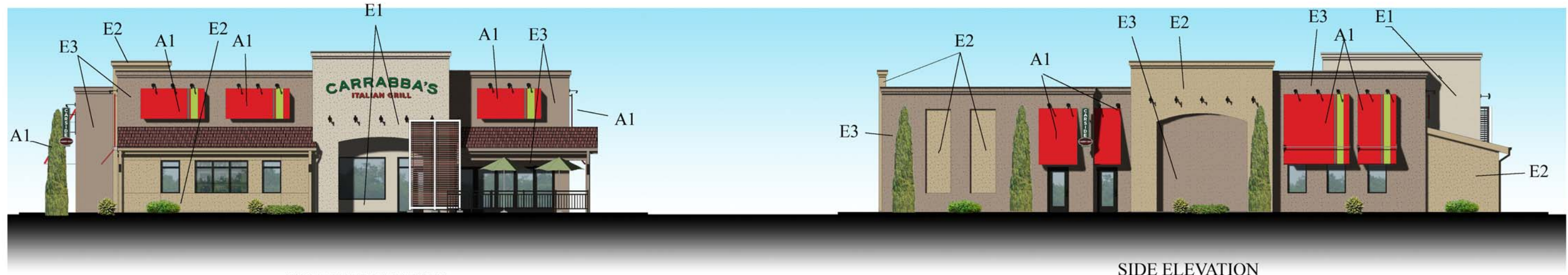
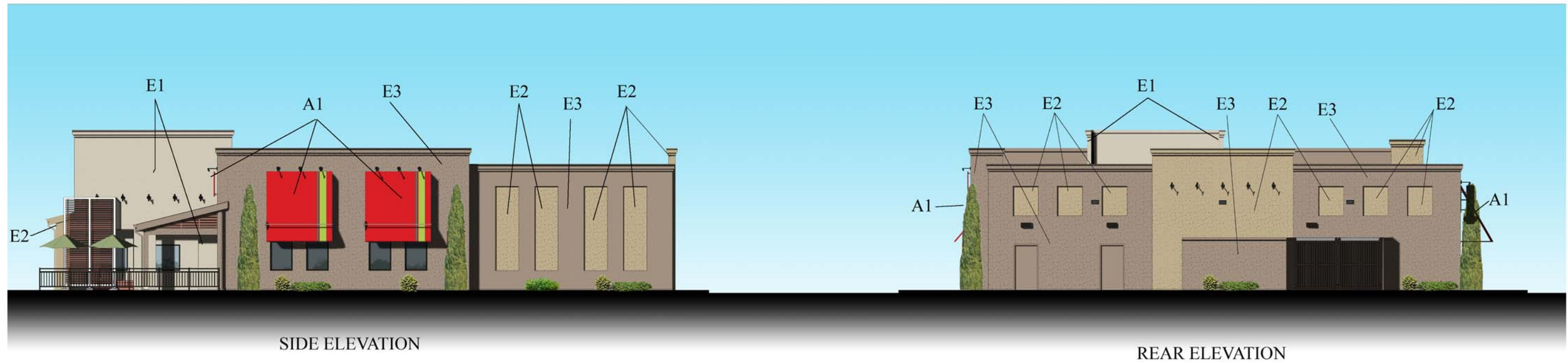


# PROPOSED CARRABBA'S ITALIAN GRILL PALM COAST, FLORIDA



FRONT ELEVATION

SIDE ELEVATION



SIDE ELEVATION

REAR ELEVATION

NOTE: MECHANICAL EQUIPMENT IS LOCATED ON THE ROOF WITH RAISED PARAPETS TO SHIELD THE EQUIPMENT

## FINISHES

- E1 EIFS WALLS:  
SHERWIN WILLIAMS COLOR  
"ACCESSIBLE BEIGE"
- E2 EIFS WALLS:  
SHERWIN WILLIAMS COLOR  
"BASKET BEIGE"

- E3 EIFS WALLS:  
GLIDDEN COLOR  
"WRIGHT STONE"
- A1 FABRIC AWNING  
BY OTHERS

DATE: 07/27/2012

**JAS ARCHITECTURE**

JON W. SAMMER, AIA  
3921 OLD LEE HIGHWAY,  
SUITE 72-B  
FAIRFAX, VIRGINIA 22030  
703-591-0747